



Co-funded by the
Erasmus+ Programme
of the European Union



Att använda WoW-HI-applikationen och den pedagogiska plattformen för undervisning av elever med SEND - särskilda utbildningsbehov och funktionsvariationer

Projekt Erasmus + "Att gå vår väg genom historien"

2020-1-SE01-KA201-077955



Använda APPen för undervisning av elever med SEND

Appen kan med fördel användas för undervisning av elever med särskilda utbildningsbehov och funktionsvariationer (SEND):

- APP:ens gränssnitt använder piktogram för alla funktioner, vilket gör den lätt att använda
- Texterna är korta och relevanta för att hjälpa eleverna att lära sig
- Dyslektiska elever kan lyssna på texterna
- Alla personer och händelser illustreras med bilder för att hjälpa eleverna att göra kopplingen mellan texten och den faktiska personen eller händelsen



Använda APP i undervisningen av elever med SEND

- Vid inomhusundervisning kan elever i behov av särskilt stöd läsa texten genom att trycka på den blå punkten (Bild 1)
- När du befinner dig utomhus eller promenerar genom staden visas texten direkt på telefonens skärm (Foto 2)

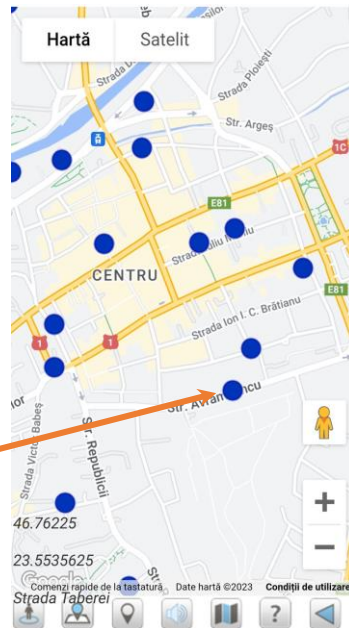


Bild 1

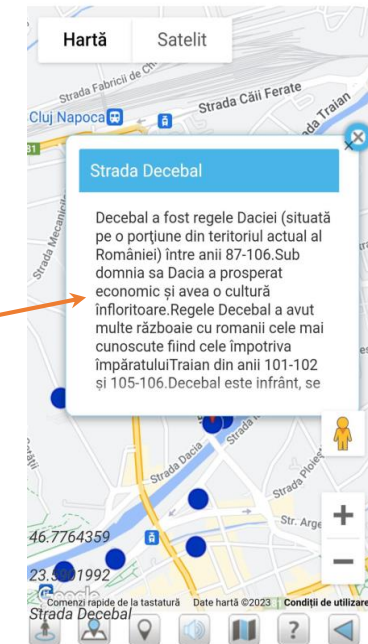


Foto 2



Använda APPen i undervisningen av elever med SEND

- Eleverna kan höra texten med hjälp av volymreglaget längst ned på skärmen (Bild 1) eller scrolla ned till högtalarsymbolen i fönstret (Bild 2)

Bild 1

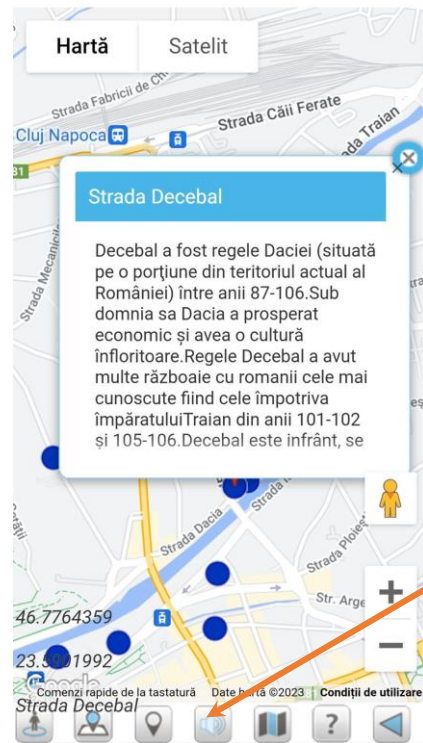
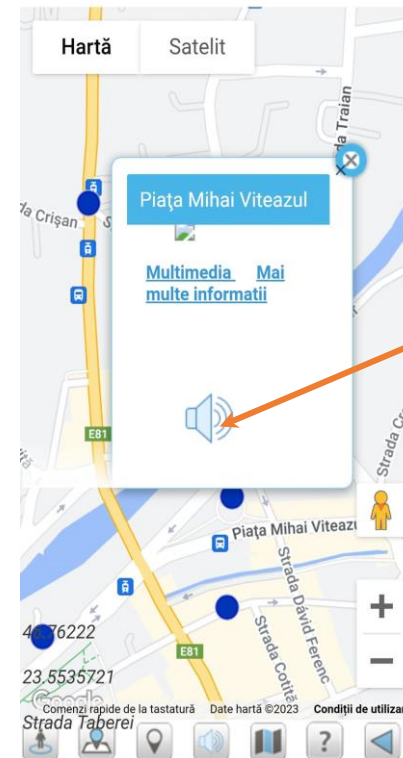


Bild 2





Använda APPen i undervisning av elever med SEND

- Genom att scrolla i det öppna fönstret kan eleverna också se bilden av den person/händelse som gav gatan dess namn.





Att använda den pedagogiska plattformen i undervisning av elever med SEND

- Utbildningsplattformen omfattar lektionsplaner som är anpassade till elever med SEND. Planerna bygger på information från den geospaciala databasen och från applikationen.
- Med hjälp av mallarna i plattformen kan lärare förbereda lektionsplaner som är anpassade till elever i behov av särskilt stöd.



LESSON PLAN

ID 54

TITLE	The monarchy after World War I
TARGET GROUP	8 th grade (students with special educational needs)
SUBJECT	History The King Ferdinand using WOW-HI Educational Online Platform (ID: 54, Street name: Regina Ferdinand, Cluj-Napoca, Romania)
CURRICULUM COMPATIBILITY	The content is part of the History Curriculum , 8 th grade, for students with moderate and mild intellectual disabilities approved by the Ministry of Education for 2022-23
COGNITIVE AREAS INVOLVED	Romania in the XX-XXI centuries
STUDENT KNOWLEDGE AND PERCEPTION	The students already know about The World War I and The Great Union of 1918 from the unit 9 (lessons 1 and 2) from their history school book
CLASSROOM ORGANIZATION AND REQUIRED INFRASTRUCTURE	Students will work in groups of three with one tablet per group using the WOW-HI Educational online Platform. Resources: -procedural resources: conversation, explanation, problematization, exercise -material resources: laptop, tablets-connected to the internet, history textbook, boards, Power Point presentation, worksheets
SOFTWARE	internet, browser, Microsoft Word
EXPECTED LEARNING RESULTS	After completing the activities proposed in this teaching scenario, students are expected to have achieved the following objectives: <ul style="list-style-type: none"> to recognize the Romanian monarchs from the interwar period to enumerate the main historical events during the reign of King Ferdinand to identify achievements in the social field during the reign of King Ferdinand to understand how to use the WOW-HI educational platform to use various electronic tools in the study of history to increase the ability of working in teams
DURATION	45'
DESCRIPTION	The pedagogical methods used are: conversation, explanation, problematization, exercise for the students to construct their own knowledge upon the foundation of previous learning. The teacher presents images of Romanian monarchs, emphasizing on those from interwar period. In order to

consolidate their knowledge, students are suggested to arrange the monarch portraits on a board in the chronological order of their reign.

To gain knowledge about King Ferdinand The WOW-HI Educational On-line Platform, Power Point presentation and History school book will be used. This platform will offer special material for pupils to learn. This will be used for: identifying King Ferdinand Street, reading and hearing information about it.

In order to consolidate the knowledge of the students an printed worksheet will be distributed to the students.

The worksheet consists four activities:

ACTIVITY 1 To identify the monarchs of Romania from the interwar period

ACTIVITY 2 & 3 To learn about King Ferdinand and about the historical events during his reign

ACTIVITY 4 To learn about the achievements in the social field during the reign of King Ferdinand.

ADDITIONAL INFORMATION

Students with mild and moderate mental disabilities in the 8th grade are generally familiar with the use of ICT equipment and material resources used in the lesson.

The time provided in the lesson project can be adjusted during the lesson, in accordance with the needs of each student, in order to complete the set tasks

ATTENTION TO DIVERSITY

The activity is adapted to the characteristics of students with SEN.

During the lesson, the students will be supported in using the applications, in solving the tasks, with additional explanations individually.

BIBLIOGRAPHY

<http://www.digite.in/infatmasi/2007-2008/wow-hi-2008>
https://www.youtube.com/watch?v=3b7y63b7u54&list=PL81b0454b_cba0c411V5TV5

History 8th Grade, school book for typical students



Att använda den pedagogiska plattformen i undervisning av elever med SEND

- Plattformen innehåller också arbetsblad som är anpassade till elever med SEND samt andra arbetsblad som kan anpassas.

The image shows two side-by-side screenshots of a digital learning platform. The left screenshot is a worksheet titled 'WORKSHEET Alexandru Ioan Cuza' with a small portrait of the historical figure. It contains three sections: 1. Multiple-choice questions about Cuza's profession and reign. 2. A fill-in-the-blanks exercise about his reign and reforms. 3. A matching exercise between dates and events. The right screenshot shows a puzzle interface with the instruction 'Arrange the given words to get a correct question and then answer by the question.' It features three rows of word tiles and corresponding 'Question' and 'Answer' input fields. A thinking face emoji is at the top, and a thumbs-up emoji is at the bottom.