



Co-funded by the  
Erasmus+ Programme  
of the European Union



# Uso de la APP y la plataforma educativa en la educación de alumnos con SEND

Proyecto Erasmus + "Recorriendo la Historia" (en inglés)

2020-1-SE01-KA201-077955



# Utilización de la APP en la educación de alumnos con SEND

La aplicación puede utilizarse con éxito en la enseñanza de alumnos con necesidades educativas especiales y discapacidades:

- La interfaz de la APP utiliza pictogramas para todas las funciones, lo que facilita su uso.
- Los textos son breves y pertinentes para ayudar a los alumnos a aprender
- Los alumnos disléxicos pueden oír los textos
- Todas las personas y acontecimientos se ilustran con imágenes para ayudar a los alumnos a establecer la conexión entre el texto y el personaje o acontecimiento real.



# Utilización de la APP en la educación de alumnos con SEND

- En las actividades didácticas de interior, los alumnos con necesidades educativas especiales pueden leer el texto tocando el punto azul (Foto 1).
- Al aire libre o caminando por la ciudad, el texto aparecerá al instante en la pantalla del teléfono (Foto 2)

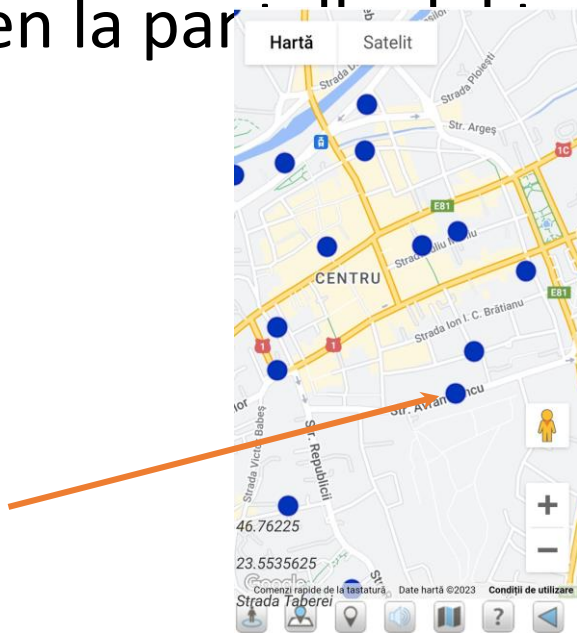


Foto 1

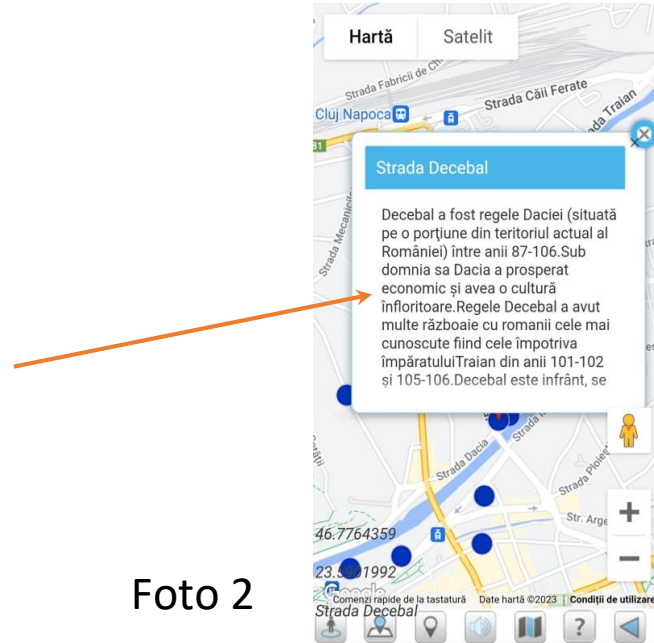


Foto 2



# Utilización de la APP en la educación de alumnos con SEND

- Los alumnos pueden escuchar el texto utilizando la barra de volumen situada en la parte inferior de la pantalla (Foto 1) o desplazándose por la ventana de información (Foto 2)

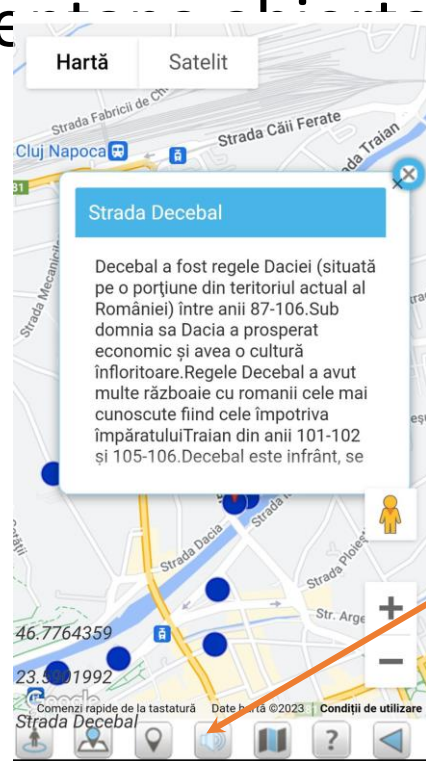


Foto 1

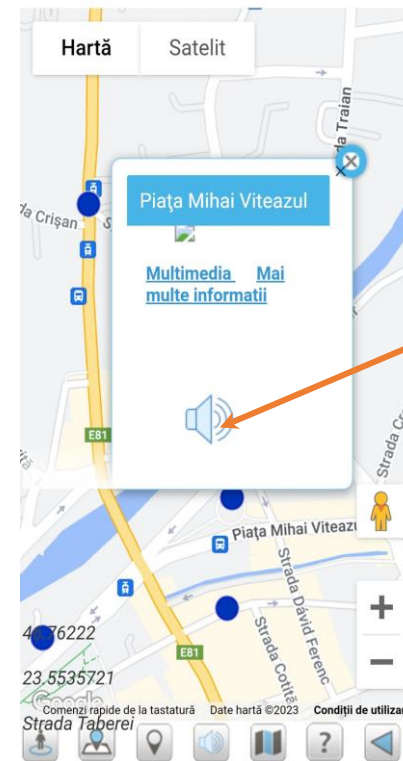


Foto 2



# Utilización de la APP en la educación de alumnos con SEND

- También desplazándose por la ventana abierta los alumnos pueden ver la imagen de la personalidad que dio nombre a la calle.







# Uso de la plataforma educativa en la educación de alumnos con SEND

- La plataforma educativa incluye planes de clase adaptados a los alumnos con necesidades educativas especiales. Dichos planes se elaboraron a partir de la información de la base de datos geoespacial y de la aplicación.
- Utilizando los modelos de la plataforma, los profesores pueden preparar planes de clase adaptados a los alumnos con necesidades educativas especiales.



## LESSON PLAN

ID 54

<b>TITLE</b>	The monarchy after World War I
<b>TARGET GROUP</b>	8 <sup>th</sup> grade ( students with special educational needs)
<b>SUBJECT</b>	History The King Ferdinand using WOW-HI Educational Online Platform (ID: 54, Street name: Regina Ferdinand, Cluj-Napoca, Romania)
<b>CURRICULUM COMPATIBILITY</b>	The content is part of the History Curriculum , 8 <sup>th</sup> grade, for students with moderate and mild intellectual disabilities approved by the Ministry of Education for 2022-23
<b>COGNITIVE AREAS INVOLVED</b>	Romania in the XX-XXI centuries
<b>STUDENT KNOWLEDGE AND PERCEPTION</b>	The students already know about The World War I and The Great Union of 1918 from the unit 9 (lessons 1 and 2) from their history school book
<b>CLASSROOM ORGANIZATION AND REQUIRED INFRASTRUCTURE</b>	Students will work in groups of three with one tablet per group using the WOW-HI Educational online Platform. Resources: -procedural resources: conversation, explanation, problematization, exercise -material resources: laptop, tablets-connected to the internet, history textbook, boards, Power Point presentation, worksheets
<b>SOFTWARE</b>	internet, browser, Microsoft Word
<b>EXPECTED LEARNING RESULTS</b>	After completing the activities proposed in this teaching scenario, students are expected to have achieved the following objectives: <ul style="list-style-type: none"> <li>to recognize the Romanian monarchs from the interwar period</li> <li>to enumerate the main historical events during the reign of King Ferdinand</li> <li>to identify achievements in the social field during the reign of King Ferdinand</li> <li>to understand how to use the WOW-HI educational platform</li> <li>to use various electronic tools in the study of history</li> <li>to increase the ability of working in teams</li> </ul>
<b>DURATION</b>	45'
<b>DESCRIPTION</b>	The pedagogical methods used are: conversation, explanation, problematization, exercise for the students to construct their own knowledge upon the foundation of previous learning. The teacher presents images of Romanian monarchs, emphasizing on those from interwar period. In order to

consolidate their knowledge, students are suggested to arrange the monarch portraits on a board in the chronological order of their reign.

To gain knowledge about King Ferdinand The WOW-HI Educational On-line Platform, Power Point presentation and History school book will be used. This platform will offer special material for pupils to learn. This will be used for: identifying King Ferdinand Street, reading and hearing information about it.

In order to consolidate the knowledge of the students an printed worksheet will be distributed to the students.

The worksheet consists four activities:

ACTIVITY 1 To identify the monarchs of Romania from the interwar period

ACTIVITY 2 & 3 To learn about King Ferdinand and about the historical events during his reign

ACTIVITY 4 To learn about the achievements in the social field during the reign of King Ferdinand.

### ADDITIONAL INFORMATION

Students with mild and moderate mental disabilities in the 8<sup>th</sup> grade are generally familiar with the use of ICT equipment and material resources used in the lesson.

The time provided in the lesson project can be adjusted during the lesson, in accordance with the needs of each student, in order to complete the set tasks

### ATTENTION TO DIVERSITY

The activity is adapted to the characteristics of students with SEN.

During the lesson, the students will be supported in using the applications, in solving the tasks, with additional explanations individually.

### BIBLIOGRAPHY

<http://www.digitale.informatiispost.ro/wowhi.php>  
<https://www.youtube.com/watch?v=3b7u2E8H0d8>  
[www.cbr.ro/TV/STUD](http://www.cbr.ro/TV/STUD)

History 8<sup>th</sup> Grade, school book for typical students



# Uso de la plataforma educativa en la educación de alumnos con SEND

- La plataforma también contiene fichas adaptadas a los alumnos con necesidades educativas especiales, así como otras fichas que pueden adaptarse.

The image shows two pages from an educational platform. The left page is a worksheet titled 'WORKSHEET Alexandru Ioan Cuza' with a small portrait of the subject. It contains three sections: 1. Multiple-choice questions about Alexandru Ioan Cuza's profession and reign. 2. A fill-in-the-blanks exercise about his reign and the union of Moldavia and Wallachia. 3. A matching exercise between dates and events. The right page is a puzzle activity titled '4. Puzzle:' with a thinking face emoji. It contains three puzzles where words are scrambled and the user must rearrange them to form a question. The first puzzle uses words like 'what', 'be', 'is', 'was', 'the', 'of', 'a', 'an', 'on', 'at', 'in', 'to', 'from', 'by', 'with', 'without', 'and', 'or', 'but', 'if', 'then', 'so', 'because', 'as', 'since', 'until', 'during', 'before', 'after', 'between', 'among', 'against', 'along', 'across', 'through', 'under', 'above', 'below', 'inside', 'outside', 'in front of', 'in back of', 'in between', 'in the middle of', 'in the end', 'at the end of', 'at the beginning of', 'at the bottom of', 'at the top of', 'at the side of', 'at the corner of', 'at the edge of', 'at the base of', 'at the peak of', 'at the tip of', 'at the bottom', 'at the top', 'at the side', 'at the corner', 'at the edge', 'at the base', 'at the peak', 'at the tip'. The second puzzle uses words like 'question', 'answer', 'be', 'What', 'where', 'is', 'the'. The third puzzle uses words like 'was', 'was', 'What', 'found', 'is', 'the', '?', 'could', 'of', 'the'. Each puzzle has a 'Question' line and an 'Answer' line. A thumbs-up emoji is at the bottom of the puzzle page.