



Co-funded by the
Erasmus+ Programme
of the European Union



Utilizarea APP și a platformei educaționale în educația elevilor cu SEND

Proiectul Erasmus + "Walking our Way through History"

2020-1-SE01-KA201-077955



Utilizarea APP în educația elevilor cu SEND

Aplicația poate fi utilizată cu succes în predarea elevilor cu nevoi educaționale speciale și dizabilități (SEND):

- Interfața aplicației utilizează pictograme pentru toate funcțiile, ceea ce face ca aceasta să fie ușor de utilizat.
- Textele sunt scurte și relevante pentru a-i ajuta pe elevi să învețe
- Elevii dislexici pot auzi textele
- Toate persoanele și evenimentele sunt ilustrate cu imagini, pentru a-i ajuta pe elevi să facă legătura între text și personajul sau evenimentul real.



Utilizarea APP în educația elevilor cu SEND

- În cadrul activităților de predare în interior, elevii SEND pot citi textul atingând punctul albastru (Foto 1).
- Când sunteți în aer liber sau când vă plimbați prin oraș, textul va apărea instantaneu pe ecranul telefonului (Foto 2).

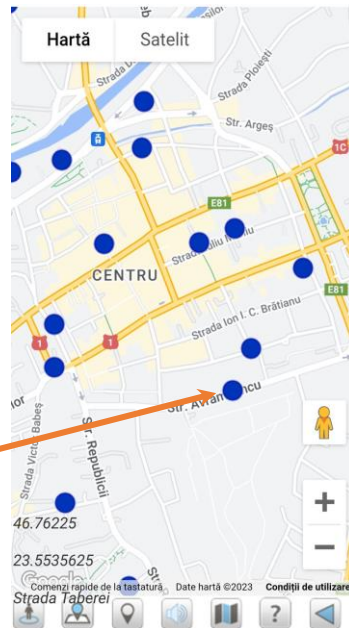


Foto 1

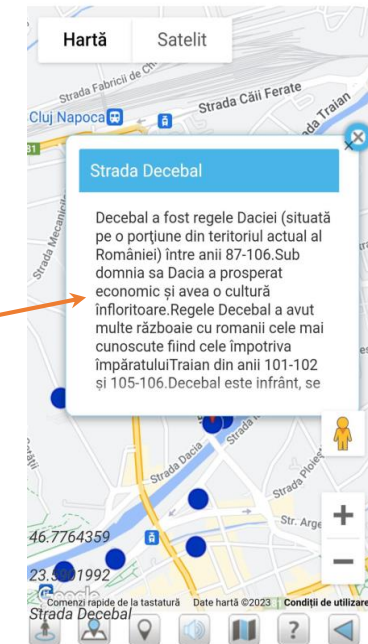


Foto 2



Utilizarea APP în educația elevilor cu SEND

- Elevii pot auzi textul folosind bara de volum din partea inferioară a ecranului (Foto 1) sau derulând fereastra deschisă (Foto 2).

Foto 1

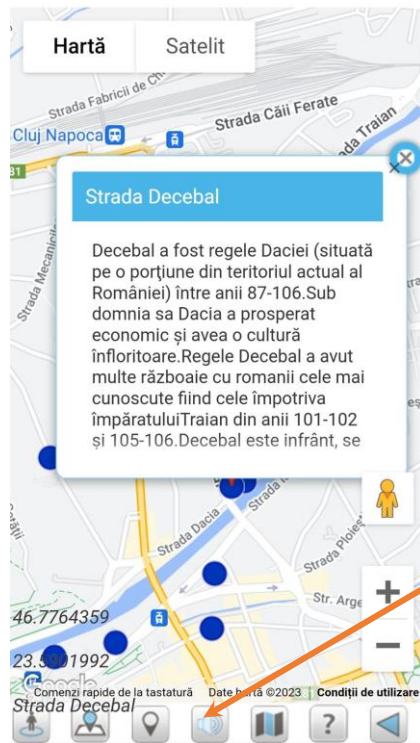
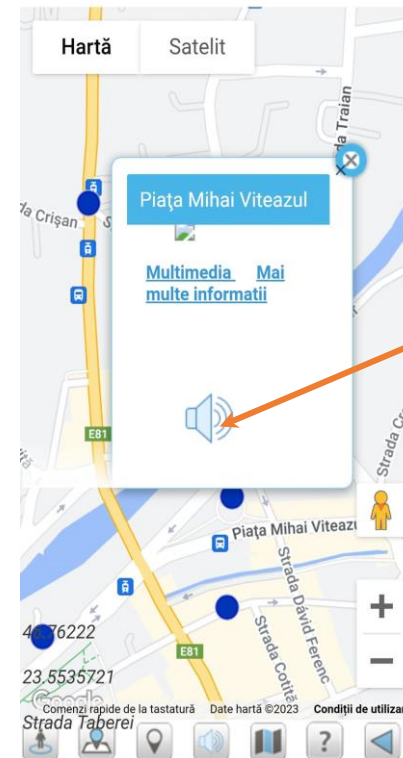


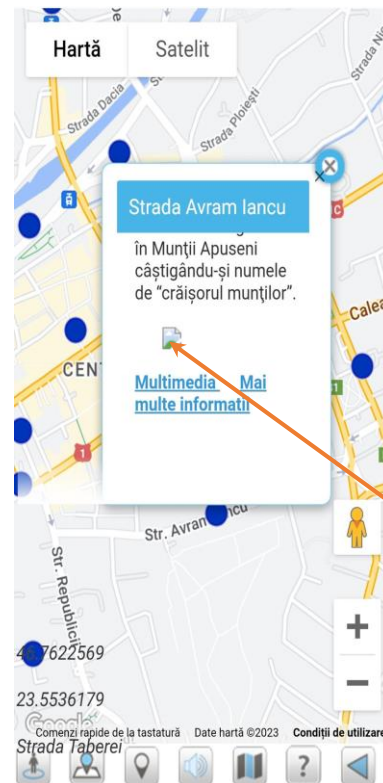
Foto 2





Utilizarea APP în educația elevilor cu SEND

- De asemenea, derulând fereastra deschisă, elevii pot vedea imaginea personalității care a dat numele străzii.





Utilizarea platformei educaționale în educația elevilor cu SEND

- Platforma educațională cuprinde planuri de lecții adaptate pentru elevii cu SEND. Aceste planuri au fost construite pe baza informațiilor din baza de date geospațiale și din aplicație.
- Folosind modelele din platformă, profesorii pot pregăti planuri de lecții adaptate elevilor SEND.



LESSON PLAN

ID 54

TITLE	The monarchy after World War I
TARGET GROUP	8 th grade (students with special educational needs)
SUBJECT	History The King Ferdinand using WOW-HI Educational Online Platform (ID: 54, Street name: Regina Ferdinand, Cluj-Napoca, Romania)
CURRICULUM COMPATIBILITY	The content is part of the History Curriculum , 8 th grade, for students with moderate and mild intellectual disabilities approved by the Ministry of Education for 2022-23
COGNITIVE AREAS INVOLVED	Romania in the XX-XXI centuries
STUDENT KNOWLEDGE AND PERCEPTION	The students already know about The World War I and The Great Union of 1918 from the unit 9 (lessons 1 and 2) from their history school book
CLASSROOM ORGANIZATION AND REQUIRED INFRASTRUCTURE	Students will work in groups of three with one tablet per group using the WOW-HI Educational online Platform. Resources: -procedural resources: conversation, explanation, problematization, exercise -material resources: laptop, tablets-connected to the internet, history textbook, boards, Power Point presentation, worksheets
SOFTWARE	internet, browser, Microsoft Word
EXPECTED LEARNING RESULTS	After completing the activities proposed in this teaching scenario, students are expected to have achieved the following objectives: <ul style="list-style-type: none"> to recognize the Romanian monarchs from the interwar period to enumerate the main historical events during the reign of King Ferdinand to identify achievements in the social field during the reign of King Ferdinand to understand how to use the WOW-HI educational platform to use various electronic tools in the study of history to increase the ability of working in teams
DURATION	45'
DESCRIPTION	The pedagogical methods used are: conversation, explanation, problematization, exercise for the students to construct their own knowledge upon the foundation of previous learning. The teacher presents images of Romanian monarchs, emphasizing on those from interwar period. In order to

consolidate their knowledge, students are suggested to arrange the monarch portraits on a board in the chronological order of their reign.

To gain knowledge about King Ferdinand The WOW-HI Educational On-line Platform, Power Point presentation and History school book will be used. This platform will offer special material for pupils to learn. This will be used for: identifying King Ferdinand Street, reading and hearing information about it.

In order to consolidate the knowledge of the students an printed worksheet will be distributed to the students.

The worksheet consists four activities:

ACTIVITY 1 To identify the monarchs of Romania from the interwar period

ACTIVITY 2 & 3 To learn about King Ferdinand and about the historical events during his reign

ACTIVITY 4 To learn about the achievements in the social field during the reign of King Ferdinand.

ADDITIONAL INFORMATION

Students with mild and moderate mental disabilities in the 8th grade are generally familiar with the use of ICT equipment and material resources used in the lesson.

The time provided in the lesson project can be adjusted during the lesson, in accordance with the needs of each student, in order to complete the set tasks

ATTENTION TO DIVERSITY

The activity is adapted to the characteristics of students with SEN.

During the lesson, the students will be supported in using the applications, in solving the tasks, with additional explanations individually.

BIBLIOGRAPHY

<http://www.digitale.informatiispost.ro/wowhi.php>
<https://www.youtube.com/watch?v=3b7u2E3H0d8>
www.cbr.ro

History 8th Grade, school book for typical students



Utilizarea platformei educaționale în educația elevilor cu SEND

- Platforma conține, de asemenea, fișe de lucru adaptate pentru elevii cu SEND, precum și alte fișe de lucru care pot fi adaptate.

WORKSHEET
Alexandru Ioan Cuza

1. Circle the correct answer:
a) Alexandru Ioan Cuza was a
1. Lawyer
2. Military
3. Teacher

b) He was elected as the ruler of
1. Moldavia
2. Transylvania
3. Moldavia and Wallachia

c) Alexandru Ioan Cuza was deposed in
1. 1866
2. 1859
3. 1860

2. Fill in the blanks using the words written in brackets:
By being elected as a ruler of Moldavia and then of Wallachia, became the first of Romania. The union of this two was achieved in January 24, 1859.
One of the main expenses taken by the ruler was the reform of
(app, ruler, education, Alexandru Ioan Cuza)

3. Match with arrows the statements in column A with those in column B

A	B
January 21, 1859	Bucharest
The capital of Romania was established at	agrarian reform
The establishment of judges and tribunals	union of States
Allotment of land to peasants	Justice reform

4. Puzzle:
Arrange the given words to get a correct question and then answer by the question.

words: **ALICUVA**, What, be, in, **este**, **de**, ?
de, **este**, **de**

Question:

Answer:

words: **educație**, **despre**, ?, **este**, **de**, What, **educație**, **de**, **de**.

Question:

Answer:

words: **de**, **este**, What, **despre**, **de**, **de**, ?, **educație**, **de**, **de**.

Question:

Answer: